

# DONATING PLASMA AT BIOLIFE

## Saving a Life through Plasma Donation



Plasma is the straw-colored liquid portion of blood that remains after red blood cells, white blood cells, and platelets are removed.<sup>1</sup>

Plasma can only be obtained from healthy individuals – it cannot be artificially reproduced – making it a scarce, life-changing resource, despite it being easily and quickly replaced by the body.<sup>1,2</sup>

### HOW IS PLASMA COLLECTED?

Plasma is collected from healthy individuals through a process called plasmapheresis, with the machine collecting blood before separating the red cells and platelets from the plasma - returning them to the donor while retaining the plasma.

### HOW – AND WHY – DO WE USE PLASMA?

Plasma can be transformed into life-saving and life-sustaining therapies for people with rare and complex chronic diseases. These individuals often have no other alternative treatment options.<sup>3,4</sup>

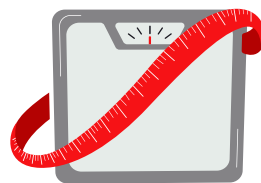
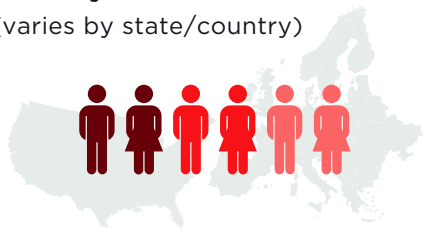
Plasma donated at BioLife is made into medicines by Takeda in five areas:<sup>5</sup>

- Immune-deficiency therapies
- Hemophilia therapies
- Blood Volume Replacement
- Alpha 1 Antitrypsin deficiency treatments
- Hereditary Angioedema therapies



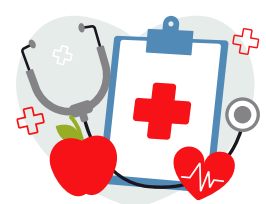
### WHO CAN DONATE?

**18+** years old  
(varies by state/country)



**110+** lbs  
(50+ kg)

In **good** health



### SAFETY AND COMFORT ARE OUR PRIORITIES

Respecting the time and health of all those who donate, our priority is to deliver the safest, most amiable, and efficient process from start to finish.



Our high-quality modern facilities are designed to maximize wellbeing and comfort, all while upholding important regulatory, compliance and safety procedures.



Trained professionals monitor and regulate the entire process for complete confidence and peace of mind.



## SIMPLE 5-STEP PLASMA DONATION PROCESS

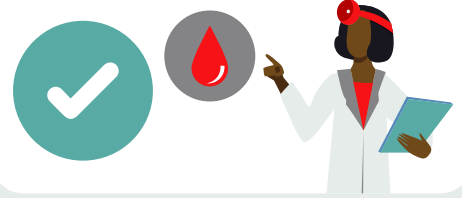
- 1 Register** on the BioLife app or online to schedule an appointment.



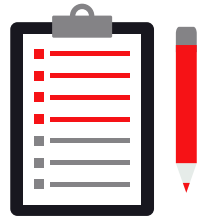
- 2 Check-in at center** with ID and proof of address.



- 3** BioLife medical experts **confirm eligibility** and complete both a health and initial blood screening.



- 4 A medical history** review is conducted.



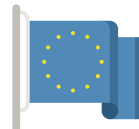
- 5 Plasma is then donated** – and a second donation scheduled. Donors must return within six months for their plasma to be approved for use.



The whole process takes up to **two hours** – on average ~800ml of plasma is collected<sup>6</sup> and



it can be done twice a week in the U.S.



and around once a week in Europe although the exact number of days varies by country.<sup>7</sup>

## WE GIVE BACK TO OUR COMMUNITIES

- We're grateful for every single person who graciously donates their plasma and recognize our responsibility to help facilitate plasma donation for years to come.
- As our way of saying thank you, we compensate donors for their time and commitment.
- Our teams build genuine connections and long-lasting relationships with local people and communities through support for – and participation in local activities and educational initiatives.



## BECOME PART OF A LIFE-SAVING JOURNEY

Visit [BioLifePlasma.com](https://www.BioLifePlasma.com) or download the BioLife app to learn more and schedule an appointment.

<sup>1</sup> PPTA. Plasma Protein Therapies. What is Plasma. <https://www.donatingplasma.org/donation/what-is-plasma>; <sup>2</sup> Perez E, et al. J Allergy Clin Immunol 2017;139(3):s1-s46; <sup>3</sup> Perez E, et al. "Update on the use of immunoglobulin in human disease: A review of evidence." <http://dx.doi.org/10.1016/j.jaci.2016.09.023>; <sup>4</sup> Wasserman R, et al. Immunotherapy 2017;9(12):1035-1050P; <sup>5</sup> MRB. Clinical Uses of Plasma Products. <https://marketingresearchbureau.com/plasma-industry/clinical-uses-of-plasma-products/>; <sup>6</sup> Laub R, et al. Vox Sanguinis 2010;99:220-231; <sup>7</sup> European Commission. Meeting between the CSL, PPTA and DG SANTE B4. 21 January 2016. [https://ec.europa.eu/health/sites/health/files/blood\\_tissues\\_organ/docs/ares20166855155\\_summary\\_minutes.pdf](https://ec.europa.eu/health/sites/health/files/blood_tissues_organ/docs/ares20166855155_summary_minutes.pdf).